

**Continuum of Care
Shifting The Focus
Component Representatives**





**Logan and
Champaign Counties**

SHP

- Madriver/Park (4 units)
- Hi Point Housing (8 units)
- Berwick/Mapletree (8 units)

Shelter Plus Care

- Logan County (4 units)
- Champaign County (4 units)



Continuum of Care



In 1994, HUD introduced the Continuum-of-Care concept to help communities with their problems of housing and homelessness in a coordinated, comprehensive, and strategic fashion. HUD's goal was for communities to coordinate and integrate their homeless assistance activities into one cohesive strategy.*

*Community Strategy to Develop a Ten Year Plan to End Homeless
Jonda Clemings, MSED, LSW

Ongoing Challenge Attendance & Participation

Goal: Increase attendance so that the make up of the CoC is in line with that identified by HUD in Exhibit 1

Basic strategies we tried...

1. Hold Community Breakfasts
2. Make personal Contacts
3. Provide Coffee and Donuts
4. Announce Meetings at other events
5. Email Invitations/Meeting reminders
6. Mail Letters



Former Central Focus: HUD Exhibit 1 Structure Section

- **Membership Type**
 - Public, Non-Profit, Sector, Individual?
- **Special Populations served**
 - SMI, SA, VET, HIV/AIDS, DV, Unaccompanied Youth?
- **Services Provided**
 - AOD, Case Management, Child Care, Healthcare, etc.?
- **HMIS**
 - Is Member's data entered into HMIS for demographics, services provided, APR, unmet needs?



Former Central Focus: Exhibit 1 Structure Section (cont'd)

- **Meetings**
 - Monthly, quarterly, biannually, annually?
 - Morning, Early morning, lunch hour?
 - Location?
- **Organizational Role/Planning Groups**
 - Whole group vs. Primary Decision Makers?
 - PR Committee, Housing Committee, etc?



New Central Focus

To coordinate and integrate homeless assistance activities into one cohesive strategy.

Outcome: To End Homelessness

Strategy: To support and strengthen the service system at the grass roots level and bridge efforts to the CoC to end homelessness using Component Representatives.



Leadership Committee members will meet monthly to focus on CoC performance and service cohesiveness to end homelessness.

Full Council will include Leadership Committee, Key Community Leaders, all interested parties and will meet quarterly

“Components”



*Components meet the immediate needs of homeless individuals and families for shelter and services and help those people move on to long-term goals, which are permanent housing and independent living or permanent supportive housing if the participants will require long-term support services**

*Community Strategy to Develop a Ten Year Plan to End Homeless
Jonda Clemings, MSED, LSW

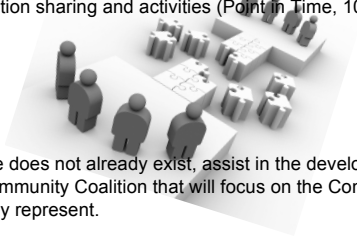
COMPONENTS



- **Outreach**
(Street Outreach, Intake, Assessment)
- **Prevention**
(Rental/Utility Assistance)
- **Sheltering**
(Emergency Shelter)
- **Housing**
(Transitional, Permanent Supportive, Permanent)
- **Supportive Services**
(Case Management, etc)

New Strategy:
“Component Representatives”

->Bridge between the CoC and the Community Coalitions that focus on the Component that they represent through information sharing and activities (Point in Time, 10 Year Plan)



->If one does not already exist, assist in the development of a Community Coalition that will focus on the Component that they represent.

New Strategy:
“Leadership Committee”
Primary Decision Making Group
Meets Monthly

- **Component Representatives**
- CoC Chair
- Formerly Homeless Person



New Strategy:
“Leadership Committee”
Primary Decision Makers

- >Ensure a Cohesive Continuum of Services
- >Determine Project Priorities
- >Approval of CoC Grant Application
- >10 Year Plan
- >Point In Time Count
- >CoC Structural Issues
- >Monitor HMIS information
- >Public Relations
- >Communicate Successes and Needs to Full Council



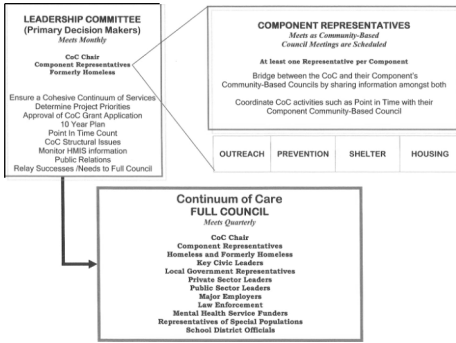
New Strategy: "Full Council"

Meets Quarterly

CoC Chair
 Component Representatives
 Homeless and Formerly Homeless
 Key Civic Leaders
 Local Government Representatives
 Private Sector Leaders
 Public Sector Leaders
 Major Employers
 Law Enforcement
 Mental Health Service Funders
 Representatives of Special Populations
 School District Officials



New Structure





If you choose to adopt this structure and want to exchange ideas or share successes, feel free to join our email list:

Linda Rudawski
 Residential Administrators, Inc.
lindar@resadmin.org
www.residentialadministrators.org
